

TWENTY-SEVENTH ANNUAL ANTIQUE GAS ENGINE & TRACTOR SHOW

FRIDAY & SATURDAY JUNE 26 & 27, 2015 PITTSBURG, KANSAS
on the CRAWFORD COUNTY HISTORICAL MUSEUM GROUNDS
BETWEEN 20TH ST. AND AIRPORT ROAD ON 69 BYPASS OUTER ROAD
Exit 69 bypass at 20th St.

MUSEUM OPEN BOTH DAYS!

COME AND ENJOY LOOKING AT ITEMS FROM THE PAST RESTORED AND OPERATING!



FRIDAY NIGHT LIVE ENTERTAINMENT!

Dan Duling and the Tractor Boys Band

2 HOUR CONCERT STARTS @ 6:30 P.M.

SPONSORED BY GIRARD PRODUCERS COOP

Bring your own chairs & enjoy the show!



Ice Cream Social Friday Night 5:30 to 6:30 (or until it's gone)

Both included in \$4 admission price!

FEATURED TRACTOR:



MINNEAPOLIS-MOLINE

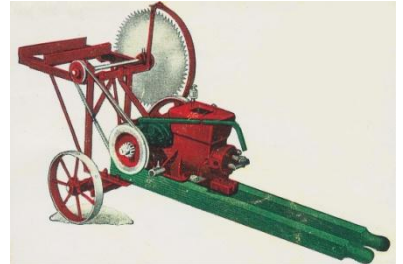
CASE 1/16 SCALE STEAM TRACTION ENGINE FUNDRAISER



1/16 Scale

Sponsored by our club. Drawing will be held Oct. 10, 2015. Contact club members for tickets!

FEATURED ENGINE:



OTTAWA

NUMEROUS OPERATING EXHIBITS!

OLD GAS ENGINES,
ANTIQUE TRACTORS,
FULL SIZE HAY BALING,
ANTIQUE FARM MACHINERY,
FLEA MARKET & CRAFT ITEMS
JUST TO NAME A FEW!

NEARBY MOTELS, CAMPING,
RESTAURANTS, SHOPPING &
CITY PARKS!

FOOD & REFRESHMENTS ON GROUNDS

\$100 GIVEAWAY

FREE ENTRY WITH EACH \$4 PAID ADMISSION
(SPECTATORS ONLY) NEED NOT BE PRESENT TO
WIN. DRAWING @ 4:30 PM SATURDAY JUNE 27

FRIDAY EVENTS:

KID'S GAMES & ACTIVITIES!

BARREL TRAIN

5:30 P.M. Ice Cream Social

6:30 P.M. Live Concert

SATURDAY EVENTS:

KID'S GAMES & ACTIVITIES!

BARREL TRAIN,

WOMEN'S SKILLET TOSS 2 CLASSES

ROLLING PIN CONTEST 2 CLASSES

DRAWINGS FOR EXHIBITOR DOOR PRIZES

PARADE OF POWER 12:00 PM

SLOW TRACTOR RACE (stock)

PRIZES FOR ALL WINNERS!

President
Andy Smith
(620)249-0255

Vice President
Gary Dowling
(620)724-3189

Show Director
Joe Winter
(417)927-3254

Kenny Wilson
(417)782-1691

Dean Harris
(620)875-3215

Jamie Gull
(620)724-8755

SWAP MEET

October 9 & 10, 2015

2016 Show, June 24 & 25

Admission (covers both days): Adults \$4.00 Children 12 & Under Free

VENDOR FEE: \$10

ELECTRICITY \$5

Hosted by the SOUTHEAST KANSAS OLD TIME GAS ENGINE AND TRACTOR CLUB

www.sekgasenginetractorclub.com

661 South Hwy. 69 Pittsburg, Kansas 66762

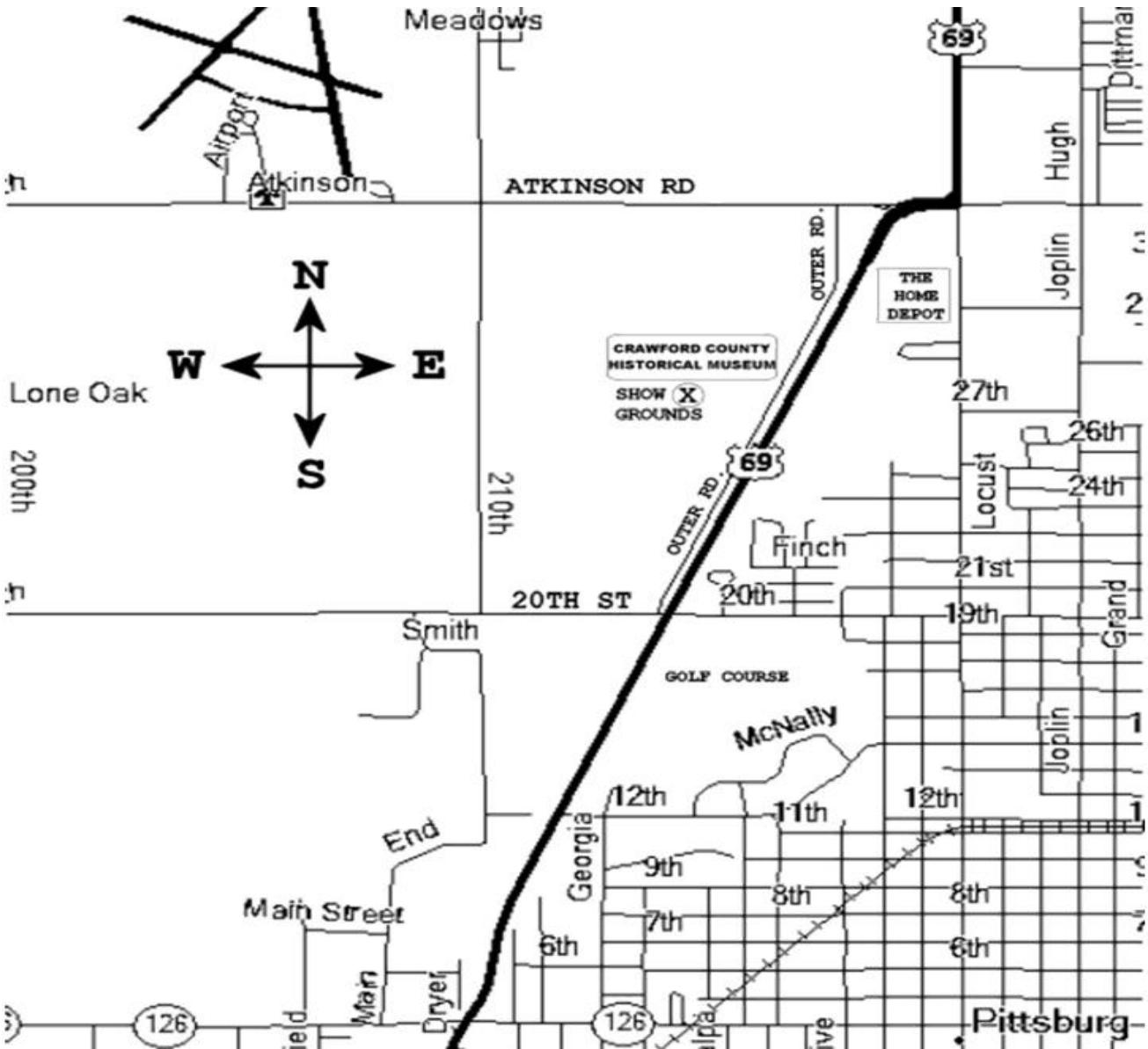
A Nonprofit Organization

NO ALCOHOLIC BEVERAGES ALLOWED- NO SEATING PROVIDED-NOT RESPONSIBLE FOR ACCIDENTS
NO 3 OR 4 WHEELERS ALLOWED!

FRIDAY NIGHT LIVE ENTERTAINMENT!
Dan Duling and the Tractor Boys Band

CONCERT STARTS @ 6:30 P.M.

Bring your own chairs & enjoy the show!
Ice Cream Social an hour before the show!
Included in \$4 admission price!



CRAWFORD COUNTY HISTORICAL MUSEUM GROUNDS • PITTSBURG, KANSAS

www.sekgasengine tractorclub.com

COME AND ENJOY LOOKING AT ITEMS FROM THE PAST RESTORED AND OPERATING
Admission (covers both days) : Adults \$4.00 Children 12 & Under Free

ANTIQUE GAS ENGINE & TRACTOR SHOW JUNE 26 & 27, 2015

SEE FRONT SIDE FOR COMPLETE DETAILS